



# ACTION PLAN 2016-18

---

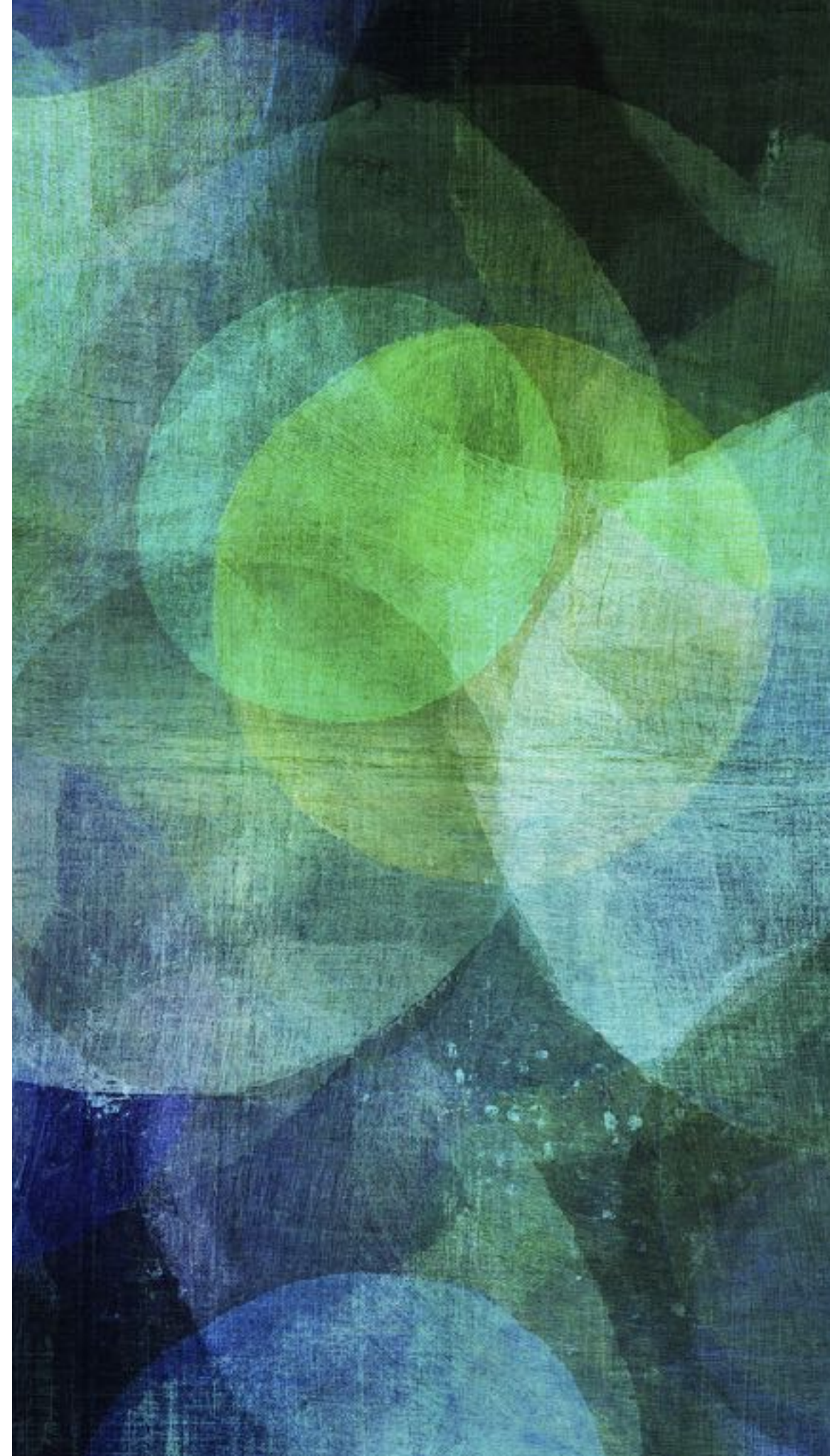
*General Assembly  
June 2017*

*rev. 1 - September 2016  
rev. 2 - March 2017  
rev. 3 - May 2017*

# 3 DIMENSIONS: INTERNAL INTERNATIONAL EXTERNAL

---

*Net-Working SSE*







## 2 MAIN OBJECTIVES

.....

- **Nurture a movement for social transformation:** *commit to a systemic change from the current socio-economic models and shift to one of greater democracy and solidarity*
- **Empower a movement of convergences:** *the determination to bring together the forces of change represented by the constellation of alter-economic movements. In spite of their very active work at local or sectorial level, their energies and strengths are currently diluted because they are still scattered.*





# 3 MAIN DIMENSIONS

.....

## ➤ Internal

- Consolidate the members' network
- Outreach for new members
- Facilitate inter-cooperation
- Panorama of SSE

## ➤ International

- Active presence in the RIPESS  
Intercontinental board
- Open to more Eu members  
participating in Int. WGs
- Mediterranean / Africa connection

## ➤ External

- Alliances and convergence
- Communication, media and knowledge  
sharing
- Socioeco and other tools
- Institutional relations: EU and Local  
Authorities



# 5 STRATEGIC AREAS OF INFLUENCE

---

## INTER-COOPERATION AMONG MEMBERS

*Facilitate the exchange and activities inside the networks who are part of RIPESS EU*

- Regional / EU Projects
- Exchange visits
- Panorama and mappings
- Trainings and peer learning

Communicating with a common voice at the European level

## ALLIANCES

*Engaging with other European networks, such as:*

- Fair trade WFTO Europe
- Peer2Peer Foundation
- FEBEA - Solidarity finance
- Cooperatives Europe
- Social Economy Europe
- REVES and similar networks

Issues concerned are:

- Public policies
- Common campaigns
- Synergia - education

## CONVERGENCES

*Converging on common values / issues with other social movements for strategy building and positioning*

- Transition Towns
- European Coord. Via Campesina
- Food sovereignty movement
- Degrowth movement
- Commons movement
- New Economic Foundation
- Common Good Economy
- Right to the City platform
- ATTAC
- GEN - Ecovillages network
- RESCoop (ren. energy coops)
- Inforse (sustainable energy)
- OUIshare
- Migrants movements
- Women's movements
- Indigenous movements
- Youth groups engaged in SSE

*Finding common grounds with:*

- Trade Unions
- Organized Consumers
- Informal Urban Workers
- Local non-profit associations
- Development NGOs
- Environmentalist organisations

## POLITICAL / PUBLIC INSTITUTIONS

- EU Parliament
- EU Commission
- UN agencies in EU
- Development banks

## SPHERE OF INFLUENCE

- Universities
- Independent Media
- Research centers
- Think tanks
- Popular education entities

# WHO ARE WE ADDRESSING ?

---







# INTERNAL DIMENSION

---

## 1. Strengthening the network and outreaching to Northern and Eastern Europe

1.1. Members' consultation:  
sharing strategic orientations,  
priorities and needs, as well as  
key events and activities (eg.  
their assemblies, with  
possibility of having RIPESS  
represented), in order to better  
focus on common issues.

Timing: 2016-2017





# INTERNAL DIMENSION

.....

**1.2. Outreach and potential new members:** From Austria to the Balkan countries, Bulgaria, Czech Republic, Poland with the existing contacts; Netherlands and Scandinavian countries. Use the Panorama process and at least one CoCo meeting to visit and participate in regional events.

**Goal:** cover 75% of European countries in the 2016-2018 period

**Timing:** 4-5 new members each year

**1.3. Create a Membership toolkit,** with all the relevant information on the network, governance, tools, possibilities and suggestions for active participation, etc.

**Timing:** GA 2017





# INTERNAL DIMENSION

.....

**1.4. Coordination meetings:** have the CoCo meetings hosted by RIPESS EU members, possibly those who are not part of the CoCo, and co-organise public events / initiatives to allow an exchange with local SE organisations / networks.

**Timing:** 3/4 every year

**1.5. General Assembly + Congress 2017.** The organisation of the GA should promote the participation of perspective members, Mediterranean dimension, public policies and local authorities...

**Timing:** The GA will take place in Greece, June 2017. Start organising in September 2016.





# INTERNAL DIMENSION

.....

## 2. Members' Inter-cooperation

2.1. There is a need to **consolidate and intensify the communication** with all members, as well as to **promote internal exchanges and inter-cooperation**.

- Create a permanent working group on inter-cooperation, based on concrete initiatives from members, in order to facilitate exchanges.

**Timing:** Followup GA2016

2.2. **Create spaces and tools** that facilitate the common strategizing, co-projecting, campaigning and economic exchange among the network's members.

**Timing:** 2016-2017





# INTERNAL DIMENSION

.....

## 2.3 Projects and fundraising

What priorities and criteria to establish when and how RIPESS Europe should apply, with other members, to Eu funding or other sources. Draft **guidelines for fundraising and projects.**

Open projects: SSEE Ivet (Apdes); SUDOE (Adepes), other projects being submitted...

**Timing:** 06/2017

## 2.4. Renew the working groups

based on existing projects / activities in each network and with one / two people from the CoCo facilitating them:

- Inter-cooperation, networking and co-construction
- Social indicators, assessing impact and social audits
- Public policies advocacy and SSE laws
- Agroecology, food sovereignty and SSE
- Panorama of SSE - mapping and visibility
- Rethinking economy, solidarity enterprise and work
- *SSE and Commons*
- *Education, training and research*

**Timing:** GA 2016 onwards





# INTERNAL DIMENSION

.....

## 3. Panorama of Solidarity Economy in Europe

3.1 Panorama of SSE implementation, with involvement of all members and perspective ones, and definition of specific outputs.

- Survey redesign and promotion; output “product” definition; members' involvement; Panorama SSE international promotion

Timing: 2016-2017

3.2 Comparison of legal frameworks (regional, national, continental) and map of public policies in territories with RELIESS/ GSEF / CITIES / RTES and others

Timing: 2016-2017





# INTERNAL DIMENSION

.....

3.3 Evolution of ESS global interoperability and open-linked data, especially thanks to all the new mapping initiatives which are taking place.

- Mapping “deep dive” in Spring 2017
- ESSGlobal website development
- [socioeco.org](http://socioeco.org) mapping dev.

Timing: 2017

3.4 Adoption of **Go-fair app** for RIPESS, integrating data from various sources (with WFTO, FEBEA, and other networks) available to all members.

Timing: end 2017





# INTERNAL DIMENSION

.....

## 4. Research

4.1 **Advisory council (Con. Cons.)** - expanding its members and finalising the Social Innovation and SSE document (06/17). Propose new research on public policies and SSE in Europe.

Connect with the SSE Summer Schools.

4.2 **Academics and researchers' involvement** - co-promote the RIUESS meetings (Inter-university network for SSE), exchanges with EMES, EURICSE, CNAM, Polanyi Institute, etc.

4.3 **SSE Study work** - specific internships for research related to RIPESS activities, with official agreements with Universities, research centers, think tanks, etc.

Timing: 2017



# INTERNATIONAL DIMENSION

---

## 5. RIPESS Intercontinental

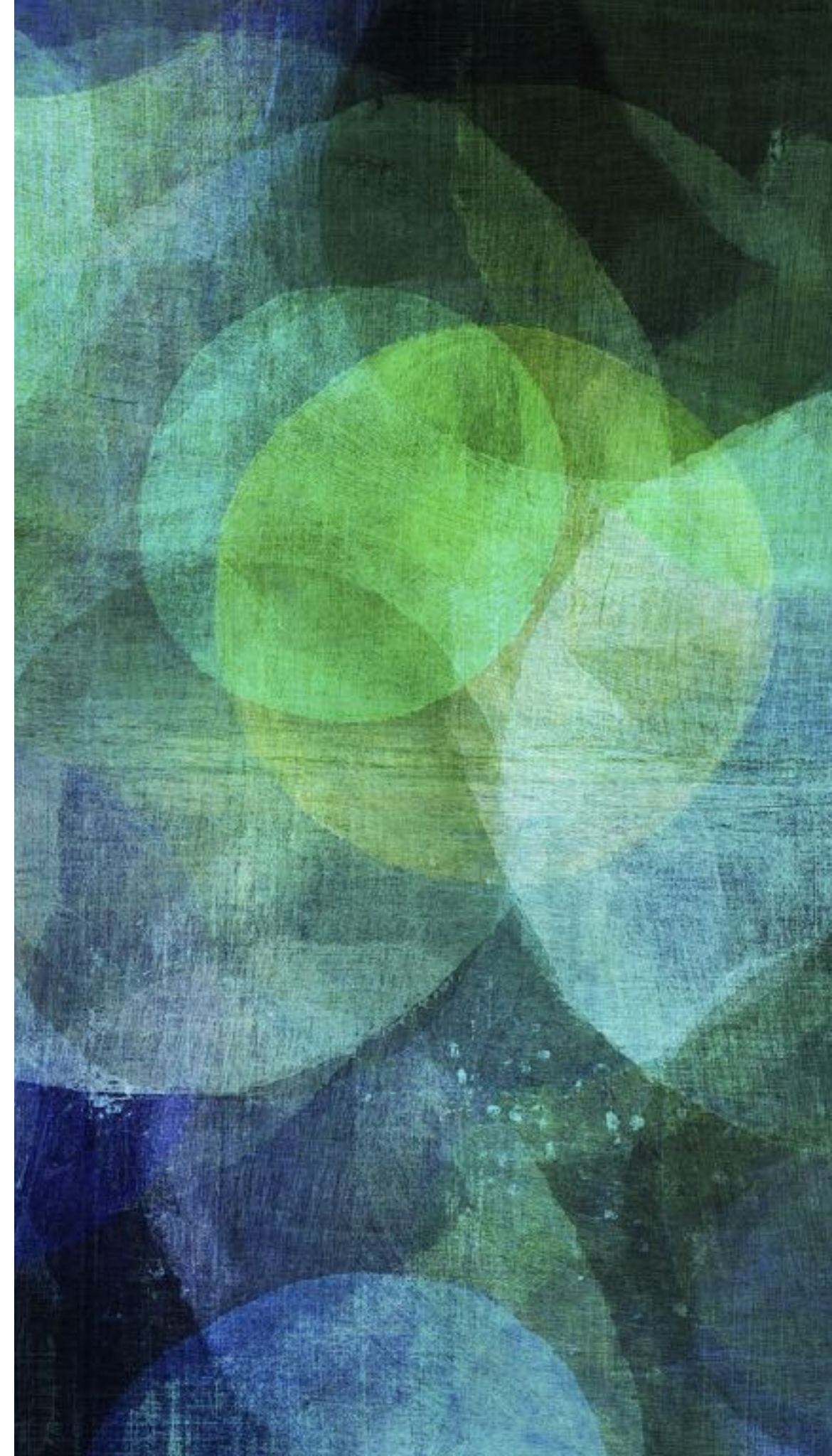
### 5.1 International working groups:

**WG1 - Education.** The main activity has been to bring together who is doing education at different levels on SSE and to think of a possible RIPESS curricula on SSE. Webinars to discuss this are being organised. RIPESS will join Synergia (MOOC – online learning platform).

**WG2 - Institutional recognition.** The group has been working on the Vision document and on the United Nations advocacy. In particular, RIPESS EU could have a more active role, especially for the UNSSE TF (task force) meetings in Geneva, FAO, ILO, etc. with offices / meetings in Europe.

**WG3 - Communication, networking and mapping.** The global website [ripestt.org](http://ripestt.org) has been completely redesigned. Mapping and interoperability are being discussed internationally on the basis of RIPESS EU's work and RIPESS will be adopting PANORAMA at the international level and work.

**WG4 - SSE and women.** This newly formed group is going to work on giving visibility to and promote the innovation of women in the SSE, and to the egalitarian practices promoting socioeconomic empowerment, with a gender perspective and a feminist approach.





# INTERNATIONAL DIMENSION

---

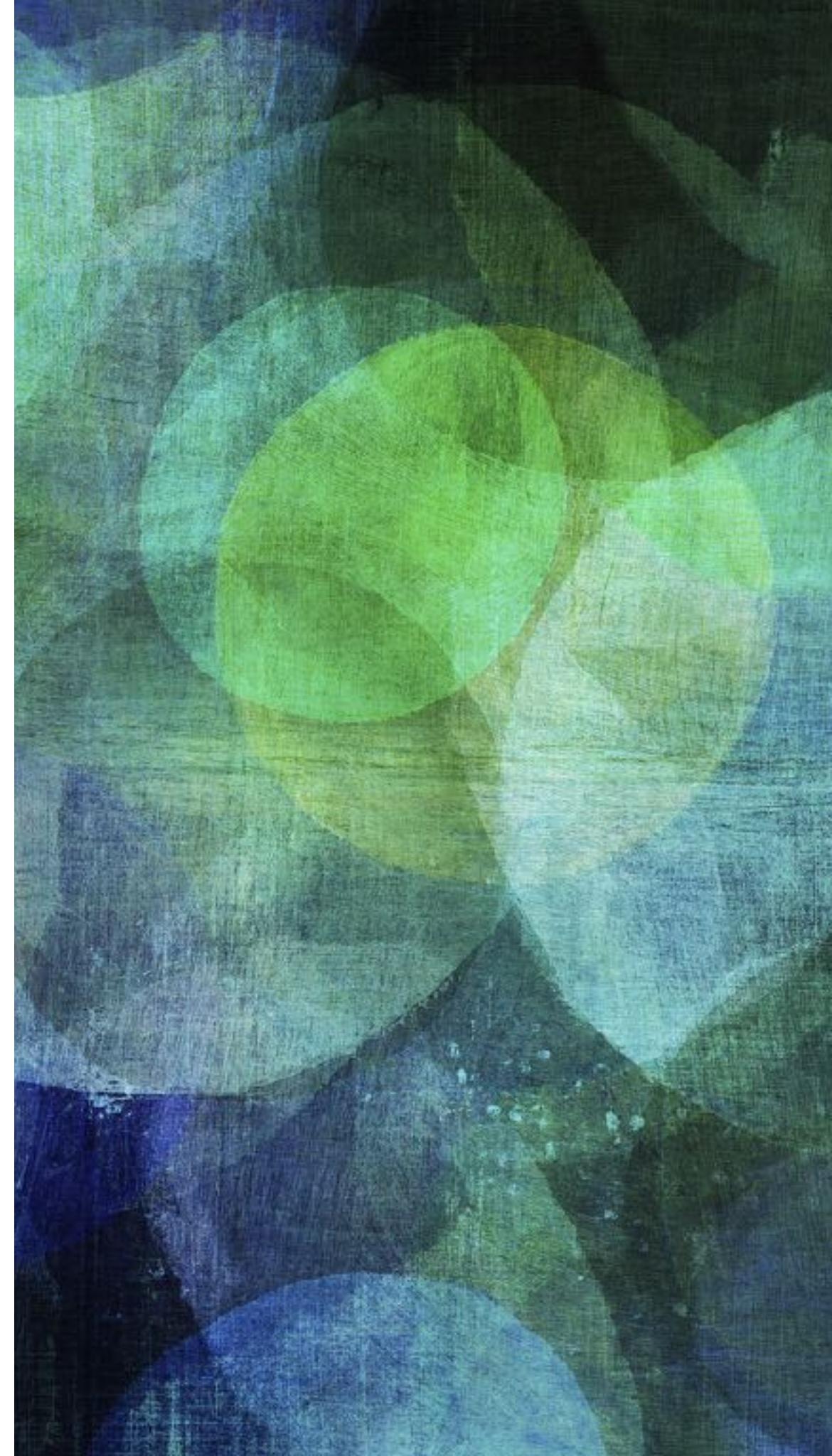
## 5.2 Campaigns and mobilisation

In general, RIPESS intercontinental is focusing on the following international aspects:

- SDGs UN 2030 Agenda and SSE
- Habitat / Right to the City and SSE
- Finance for Development and SSE
- Climate justice and SSE
- Trade justice and SSE

**Goal:** continue to work actively, involving more members and taking positions through consultations, campaigns, research and advocacy.

**Timing:** 2016-2018





# INTERNATIONAL DIMENSION

---

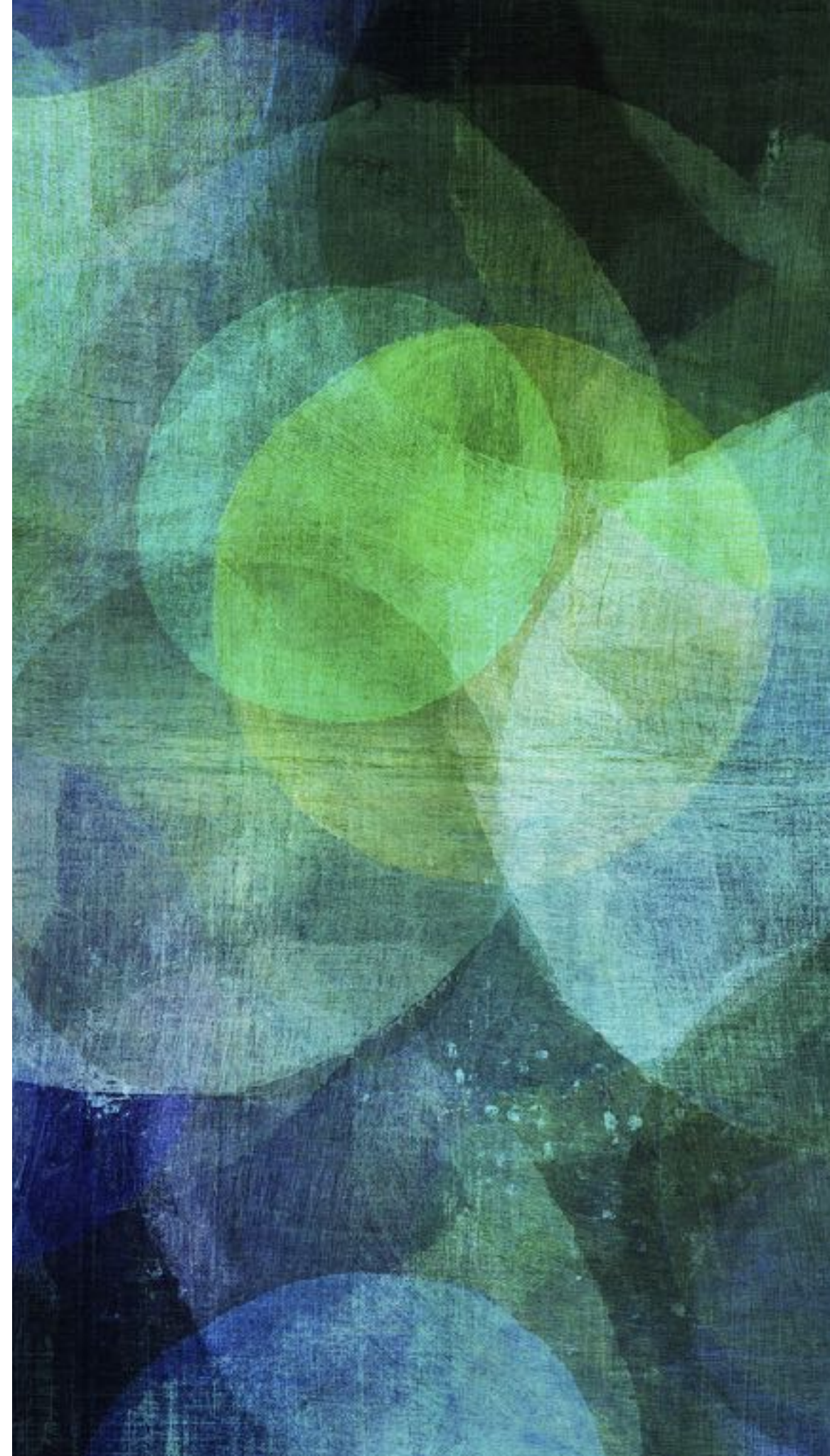
## 5.3 Networking beyond Europe

Other areas where RIPESS Europe can be active in the following months:

- Representation in international events of allied networks
- Work with the Mediterranean networks and African RAESS
- Preparation of an International Meeting in 2018 (Barcelona?)

**Goal:** Extend the participation and involve some other RIPESS EU members directly; cooperation with other regional and continental RIPESS networks

**Timing:** 2017-2018







# EXTERNAL DIMENSION

---

## 6. Alliance building

### 6.1 Co-organisation / Participation in European events

One of the main priorities for 2016 and 2017, working on the **alliances** and on a **permanent convergence process**

- Make a matrix of different movements what we have in common and areas where we can share work / spaces, etc.
- Co-organisation / participation in European events (from Degrowth, to Commons, Transition, etc.), including NESI 2017 and EFFSE 2017
- Coalition on specific themes / join campaigns (Action2015, COP22-Alternatiba, Right2theCity, Challenging the Crisis Eu SSE Year,...)

**Time:** 2016-2018





# EXTERNAL DIMENSION

.....

## 6.2 Convergences

- Open a “**Convergence**” section on the **ripress.eu** website with info and updates, docs, websites, agenda, etc.
- Joining **Synergia** institute, a MOOC bringing together Cooperative, P2P, commons and social solidarity economy
- **Work with NEF** (New Economics Foundation) and Transitions Network on “mapping” Lab on New Economies. See <http://realeconomylab.org>
- **Collaboration with SSEDAS-SUSY** European project involving 23 countries and lead by COSPE, Italian ngo. See: <http://www.solidarityeconomy.eu>

**Time:** 2016-2018





# EXTERNAL DIMENSION

---

## 7. Communication, media and knowledge sharing

7.1 The newly constituted **communication group** works on a plan and materials (a “communication kit”), possibly in 3 languages, with the help of the members.

7.2 **Online presence:** website, newsletter and social media

7.3 **Publications:** SSE basic reader, Solikon documentation book

7.4 **Socioeco:** work on expanding languages, mapping and multimedia materials

7.5 International meeting of **networking alternative economy cooperative media** from around 10 countries, during the 4th SSE European Congress (06/17)

**Time:** 2016-2018





# EXTERNAL DIMENSION

.....

## 8. Institutional relationships: European Parliament – Local authorities networks

### 8.1 European Parliament

- Social Economy intergroup
- Forum with political parties (EFSSE 2017): preparation meetings and co-organisation of external event with Social Economy Europe
- Common policy positioning for the European Parliament 2019 elections

### 8.2 Local Authorities Networks

- Participate at GSEF/CITIES
- RTES strategy meeting(s)
- XMES Catalan+ other European networks
- REVES

### 8.3 Other European institutions

- European Commission
- Council of Europe

**Timing:** 2016-2018